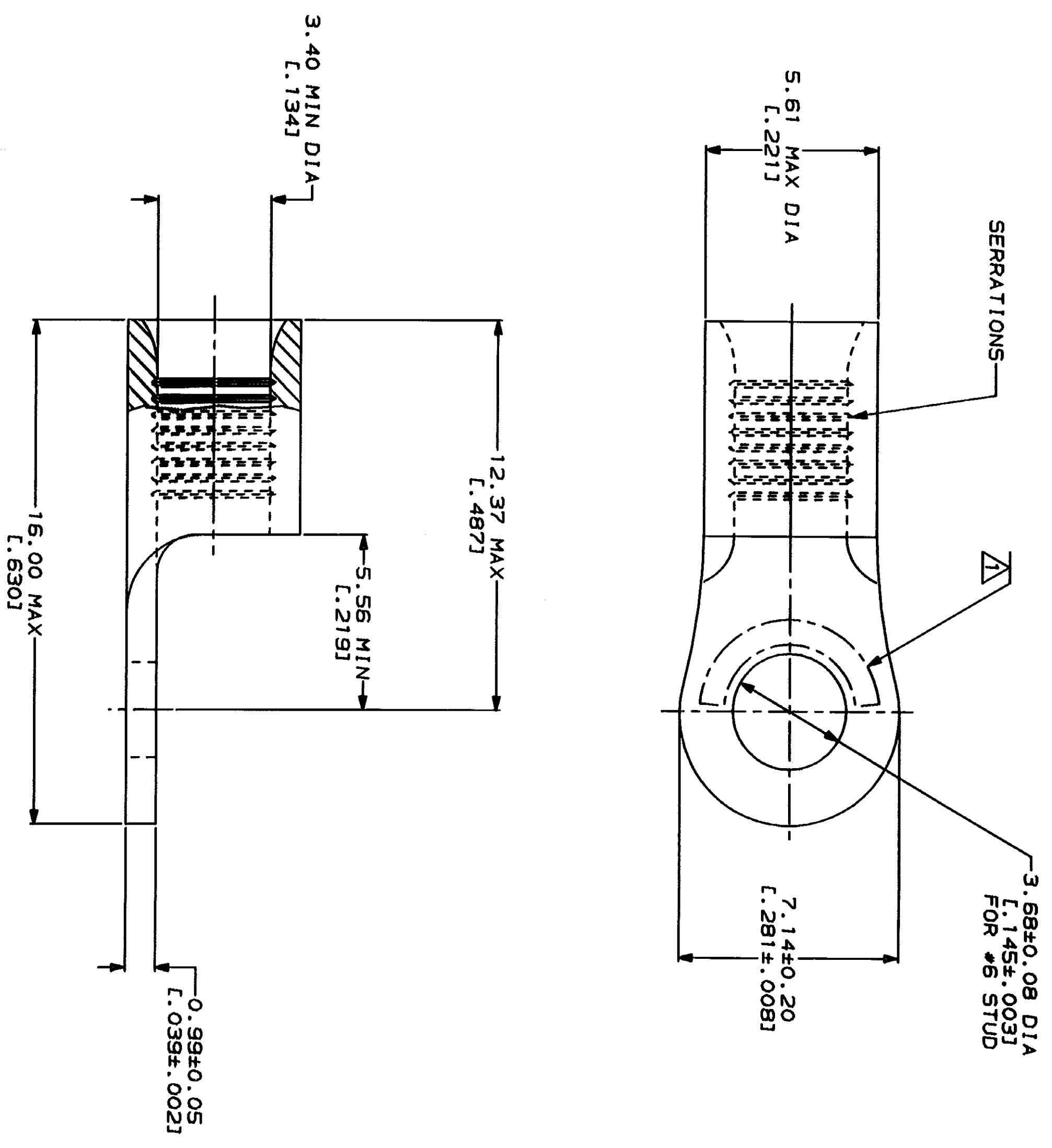


LOC	DIST	ZONE	LTR	REVISIONS	DESCRIPTION	DATE	APPD
G	14	A		REVISED PER 0720-0230-93			

METPRIG
DIMENSIONS LISTED IN MM [INCHES]

AMP WIRE RANGE	UL E13288 Listed
12-10 AWG STRANDED	12-10 AWG STRANDED
LR7189 Certified	MILITARY P/N AND CLASS
NOT CERTIFIED	NOT APPLICABLE

△ STAMP AMP 12-10* APPROX AS SHOWN



AMP INCORPORATED
CUSTOMER SERVICE SYSTEMS

FOR ADDITIONAL PRODUCT INFORMATION OR COPIES OF DRAWINGS AND TECHNICAL DOCUMENTS	PRODUCT INFORMATION CENTER 1-800-522-6752
FOR APPLICATION TOOLING INFORMATION	TOOLING ASSISTANCE CENTER 1-800-722-1111
FOR ORDER ENTRY	1-800-526-5142

MAX RECOMMENDED OPERATING TEMPERATURE: 170°C MAX	VOLTAGE RATING: NOT APPLICABLE	WIRE CROSS SECTIONAL AREA RANGE: 2.62-6.64mm ² (S, 180-13, 100) CIR MILS STRANDED	DO NOT SCALE PRINT. UNLESS SPECIFIED DIMENSIONS IN MILLIMETERS - TOLERANCES ON: 1 2 PLC DEC ± 3 PLC DEC ± ANGLES	DR 2-5-83 TA BRINKMAN CHK 2-5-83 DA PATTERSON APPD 2-5-83 DE MILLER APPD 2-5-83 JL HECKLEY PRODUCT SPEC	NAME AMP AMP Incorporated Harrisburg, PA 17105-3608
FINISH TIN PLATE 0.00254 [L.000100] MIN THK PER MIL-T-10727			APPLICATOR SPEC	SIZE CAGE CODE 00779	DRAWING NO G-34892
PART NO 34892			SCALE 8:1	SHEET 1 OF 1	

CUSTOMER DRAWING